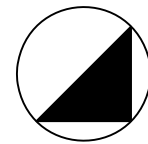


GROUND FLOOR PLAN

SITE AREA = 9350 SQ. FT. (868.62 SQ. M.)
GROUND FLOOR AREA = 8720 SQ. FT. (810.1 SQ. M.)

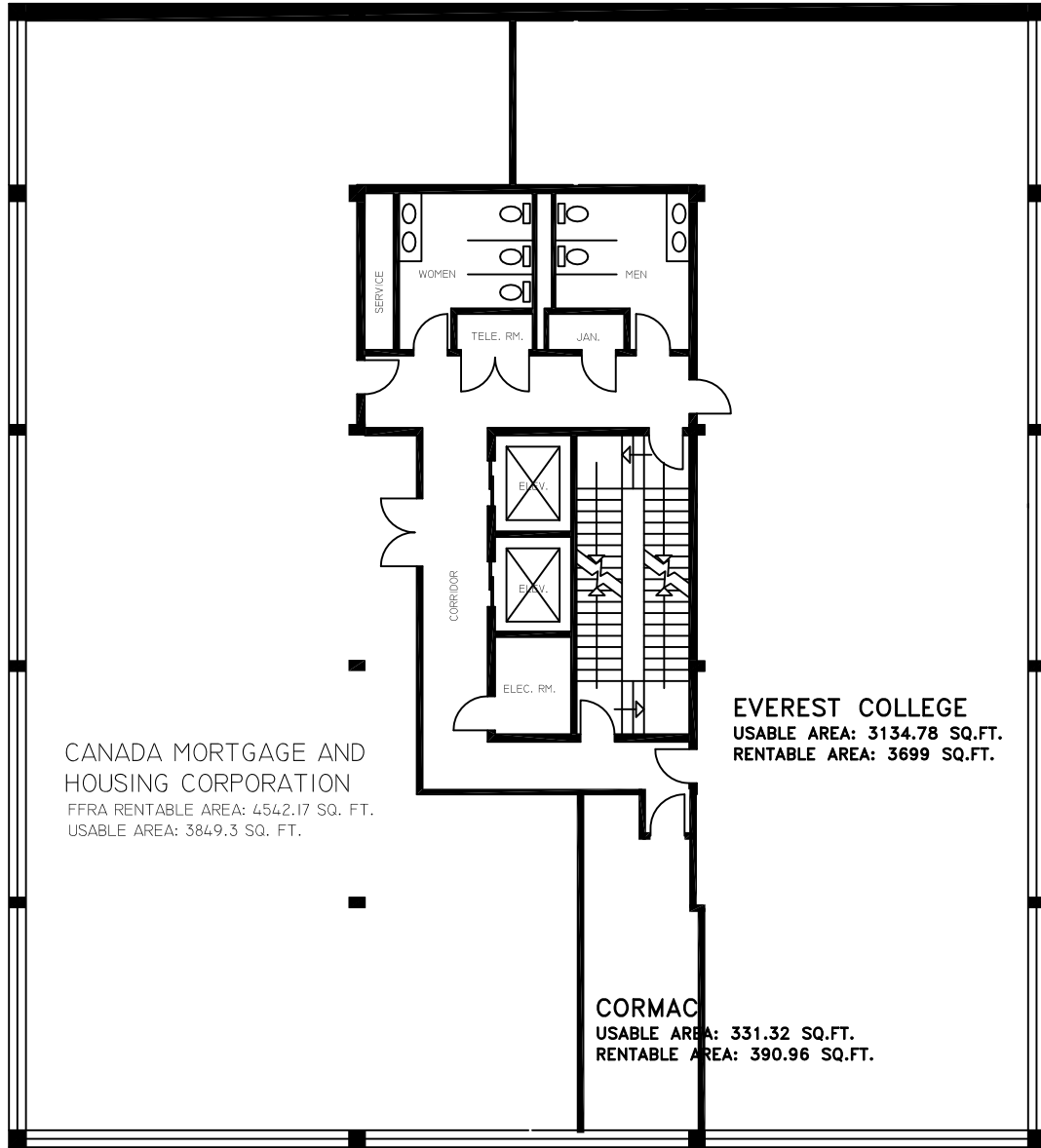


5 STOREY OFFICE BUILDING
28 N. CUMBERLAND STREET
THUNDER BAY, ONT.

91.5' (27.9M)

CUMBERLAND STREET
100.0' (30.48M)

ST. PAUL STREET



CANADA MORTGAGE AND HOUSING CORPORATION
FFRA RENTABLE AREA: 4542.17 SQ. FT.
USABLE AREA: 3849.3 SQ. FT.

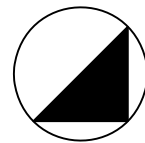
EVEREST COLLEGE
USABLE AREA: 3134.78 SQ.FT.
RENTABLE AREA: 3699 SQ.FT.

CORMAC
USABLE AREA: 331.32 SQ.FT.
RENTABLE AREA: 390.96 SQ.FT.

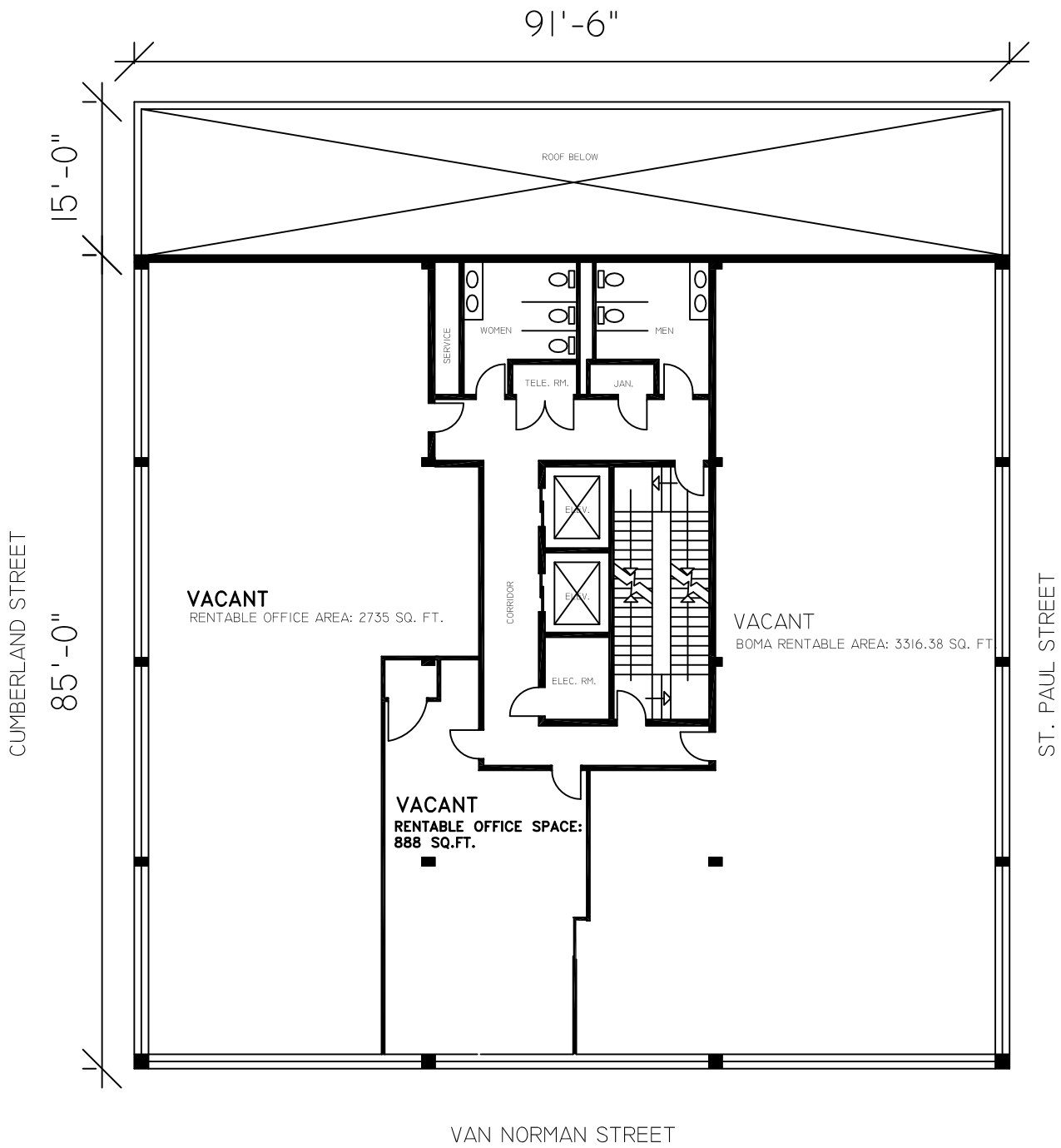
VAN NORMAN STREET

SECOND FLOOR PLAN

SITE AREA = 9350 SQ. FT. (868.62 SQ. M.)
SECOND FLOOR AREA = 9150 SQ. FT. (850.0 SQ. M.)

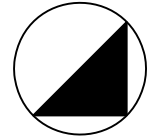


5 STOREY OFFICE BUILDING
28 N. CUMBERLAND STREET
THUNDER BAY, ONT.



THIRD FLOOR PLAN

SITE AREA = 9350 SQ. FT.
THIRD FLOOR AREA = 7777.5 SQ. FT.



5 STOREY OFFICE BUILDING
28 N. CUMBERLAND STREET
THUNDER BAY, ONT.

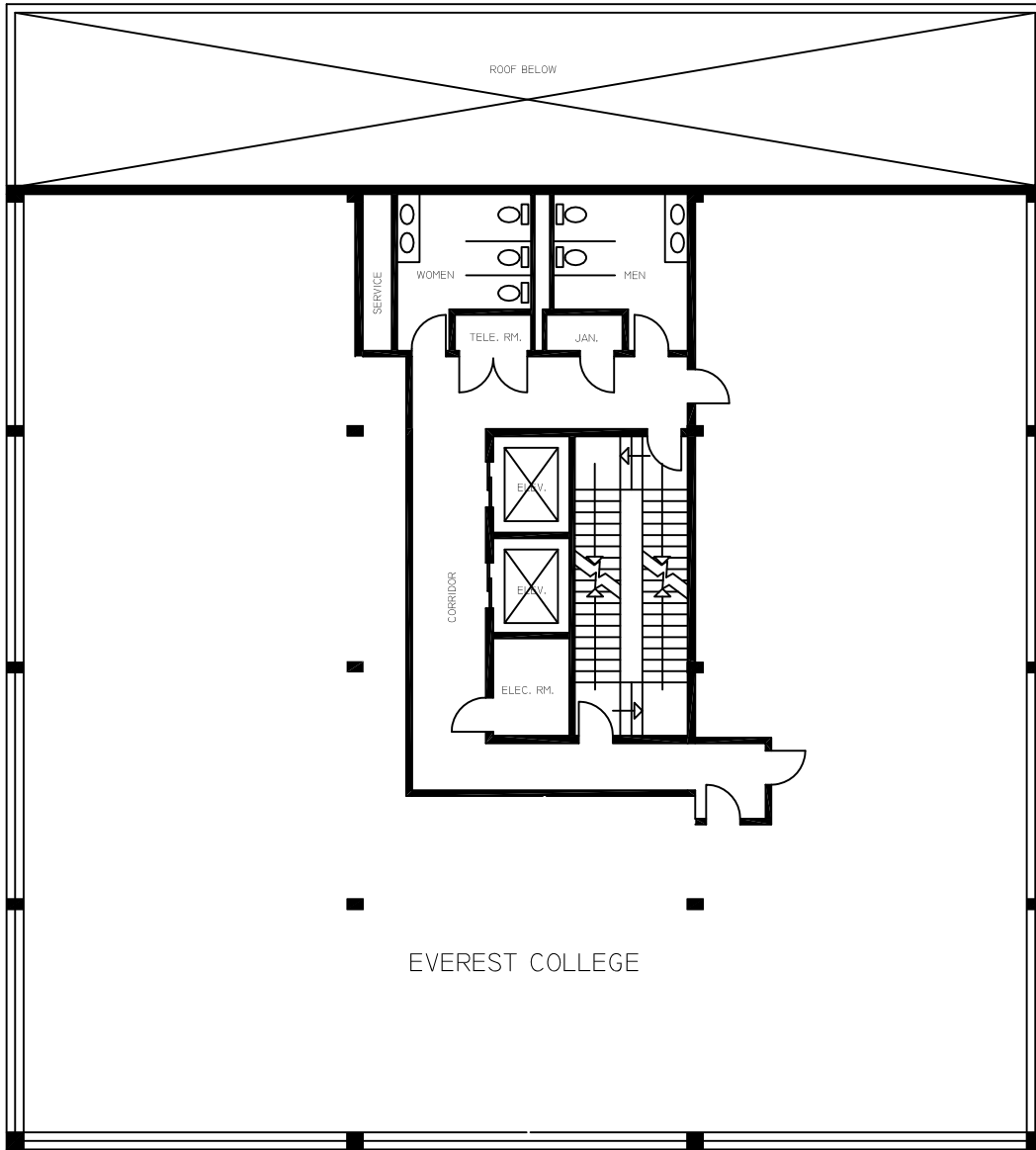
91.5' (27.9M)

15.0' (4.57M)

CUMBERLAND STREET

85.0' (25.9M)

ST. PAUL STREET



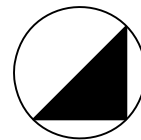
EVEREST COLLEGE

VAN NORMAN STREET

FOURTH FLOOR PLAN

SITE AREA = 9350 SQ. FT. (868.62 SQ. M.)

FOURTH FLOOR AREA = 7777.5 SQ. FT. (722.53 SQ. M.)



5 STOREY OFFICE BUILDING
 28 N. CUMBERLAND STREET
 THUNDER BAY, ONT.

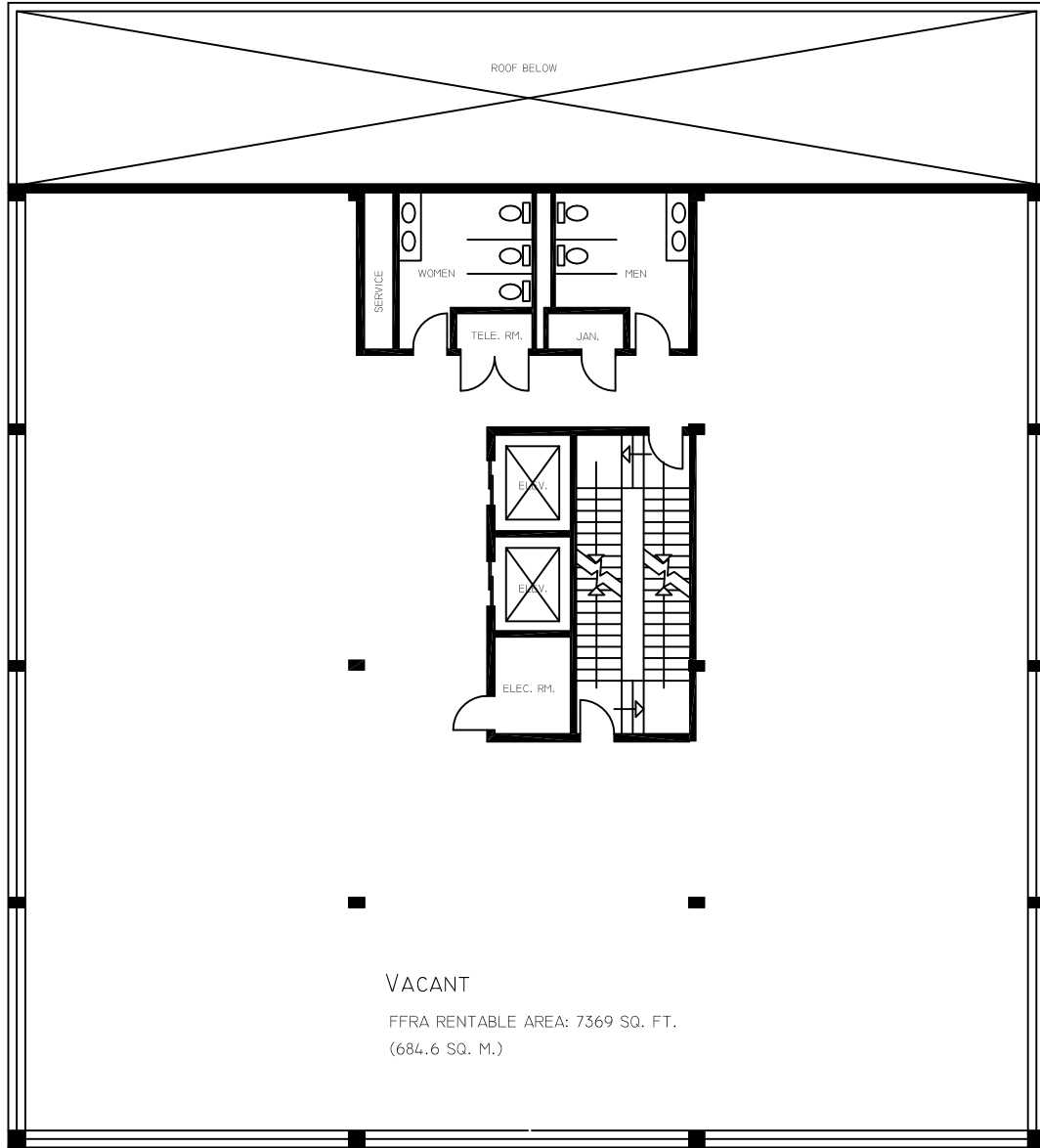
91.5' (27.9M)

15.0' (4.57M)

85.0' (25.91M)

CUMBERLAND STREET

ST. PAUL STREET

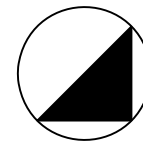


VAN NORMAN STREET

FIFTH FLOOR PLAN

SITE AREA = 9350 SQ. FT. (868.62 SQ. M.)

FIFTH FLOOR AREA = 7777.5 SQ. FT. (722.53 SQ. M.)



5 STOREY OFFICE BUILDING
 28 N. CUMBERLAND STREET
 THUNDER BAY, ONT.